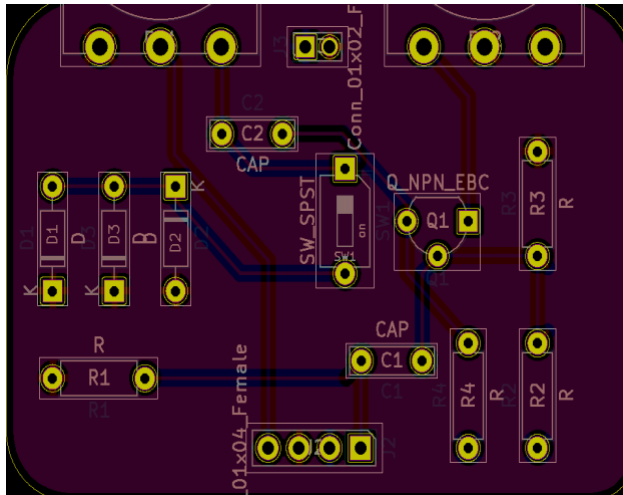
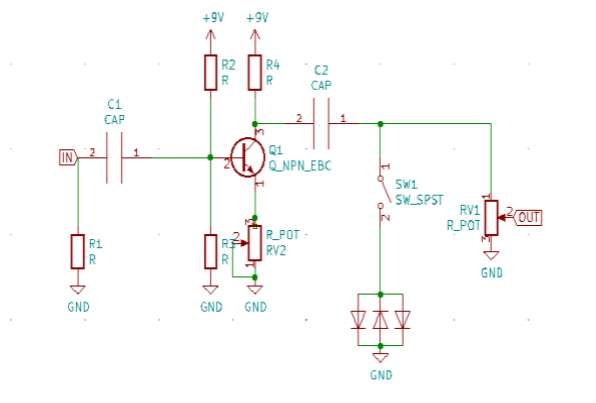


Little booster



About

The little booster is based of of the classic LPB-1 circuit. It is a simple single-stage transistor amplifier. Our Little Booster has the addition of hard clipping diodes as well as a variable potentiometer that controls the gain/distortion of the device.

Diodes (D1, D2, D3)

Every diode will create different tonal characteristics. Some have a more compressed sound, others harsher, while others will act more “Tube-like” here is a list of some options and what they might sound like. Try using just one or two! the only way to know for sure what works best is to try them out and experiment!

- Germanium: Big, compressed distortion. More tube-like
- Silicone: Classic overdrive to more distorted sounds
- LED: harsher Open and dynamic distortion

Capacitors (C1, C2)

On both, the input (R1, C1) and output (RV1, C2) of the circuit are too high pass filters. These filters let certain frequencies pass based on a cut of frequency. In this case, the rule is, the larger value the capacitor is the more bass frequencies will pass. When choosing capacitors you will want to factor in what instrument you are using the pedal fo, along with what sound you are looking for. A bass will most likely sound better with a larger cap whereas a guitar might favor a smaller one.