

NEWS BULLETIN

Alumni Association



Philadelphia College of Art

Vol. 7, No. 2, December, 1964

A HAPPY NEW YEAR from your President and Alumni Association Board.



ARE YOU HERE?*



Alumni Exhibitions Featured at PCA

Photography graduates and professionals in the field were on the spotlight at the PCA galleries from October 23 to November 23 as three exhibitions, Alumni Photography; an exhibition of paintings by Charles T. Coiner,

1964 recipient of the Alumni Medal of Merit, and a retrospective of the Class of 1914, opened simultaneously at the College, Broad and Pine Streets.

Alumni Photography, an invited and juried show of 27 photographers, placed its emphasis on young graduates of the department who are carrying on the fine traditions established by PCA's famed first graduates in the field: Irving Penn, Ben Rose, Ben Somoroff, Otto Maya and the Chairman of the PCA Photography Department, Sol Mednick. Among the new generation of photographer-graduates in the exhibition are George Krause, who shows small, intimate photographs of Spain from his travels last year on a Guggenheim Fellowship; Joseph Nettis, with industrial scenes from his book, *Philadelphia Discovered*, just published by Greater Philadelphia Magazine; and Alfred Ignarri, coordinator of PCA's Evening Division program in photography, whose provocative, stark character study of a clown was one of the outstanding pieces in the show. The exhibition also demonstrated the solid competence of top commercial photographers Elbert Budin, Ray Porter, John Hoover, Alan Vogel, and Jack Simons, PCA staff photographer.

Exhibitors in the show were:

| | |
|-------------------------|-----------------------|
| Bene Bartoli '64 | Sol Mednick |
| Elbert Budin '51 | Dan Moerder '49 |
| William F. Cadge '49 | Joseph Nettis '53 |
| Fred Carbone '53 | Lynne Obrant '63 |
| Bernard Cleff '50 | Angelo Pinto '29 |
| Leonard L. Cohen '56 | Salvatore Pinto '28 |
| Robert Giandomenico '60 | Ray Porter '57 |
| | Harris Radin '59 |
| John Hoover '53 | Shelly Roseman '55 |
| Alfred Ignarri '52 | William L. Ruffin '62 |
| George Krause '58 | Leslie A. Segal '57 |
| Otto Maya '40 | John C. Simons '61 |
| Michael B. McHale '58 | Bob Thompson '59 |
| Seymour Mednick '48 | Alan Vogel '56 |

The paintings by Charles T. Coiner were gathered from private collections in the area and represented his work over the past 20 years. Mr. Coiner, who retired in 1963 as Vice President and Executive Art Director of N. W. Ayer & Son, Inc., served as Chairman of the Board of Governors of the College

from 1952 to 1960 and as a trustee of the Philadelphia Museum of Art for the same period. He received the highest award conferred by the Alumni Association, its medal of merit, at a luncheon at the College, Saturday, October 24. Coiner has exhibited nationally and his work is in the collections of many museums and institutions, including the Whitney Museum of American Art, The Philadelphia Museum of Art, and the Pennsylvania Academy of Fine Arts; a one man show of his current work will be held in the spring at the Midtown Gallery, New York.

A retrospective exhibition of the Class of 1914, held in conjunction with the 50th reunion of the Class was on display in the auditorium of the College. The show included a watercolor by Jeanette Slocomb Edwards, widely acclaimed Wilmington painter and poet who was Poet Laureate of Delaware in 1950-54. Mrs. Edwards is listed in "Who's Who in the East", "Who's Who of American Women" and "Who's Who in Poetry." Ralph Pallen Coleman, whose illustrations of biblical stories are among the best known in America, was represented by one of his oil paintings. A volume of Coleman's illustrations, "The Way, the Truth and the Life," received the first award at the 1959 Philadelphia Book Show and his murals can be seen in the Washington Memorial Park Chapel and elsewhere.

Also in the retrospective are watercolors by M. Hazeltine Fewsmith, whose work is frequently shown in Philadelphia galleries and art centers; interior sketches by Mary Louise Corkran, a landscape designer who with her husband Colonel Wilbur S. Corkran founded the successful Rehoboth Art League of Rehoboth Beach, Delaware; and manuscript pages by James Ashbrook, a prominent Chestnut Hill illustrator and portrait painter.

Exhibitors in the 1914 Retrospective were:

James Ashbrook
Albert W. Barker
George W. Campbell
Ralph Pallen Coleman
J. Frank Copeland
(Loaned by Helen B. Murphy)
Mary Louise Corkran,
Conrad Dickel
Jeanette Slocomb Edwards
M. Hazeltine Fewsmith
William Grauer
Leopold Hauf, Jr.
Ruth Mitchell Jones
Eleanor Hart Levis
Edna Pennington Logan
Edith M. Meyers
Mary Kimball Ward

Eakins Painting Displayed

In honor of the 50th reunion of the Class of 1914, the College borrowed the portrait of the Dean of that period, Dr. Leslie W. Miller, painted by Thomas Eakins, from the Philadelphia Museum of Art.

The Mail Bag

Random sampling after Homecoming Weekend: from James P. Weir '14, Port Chester, New York:

... I think the Alumni Association did a wonderful job. I enjoyed every minute of it. It was quite something to wander around the old class rooms and corridors after 50 years had passed ...

from Edna P. Logan '13:

... I want to thank you and your committee for a lovely luncheon and pleasant afternoon ...

from Mrs. Wilbur Corkran '14:

... Please allow me to thank you for your successful effort to make an outstanding event of the 50th Anniversary of the Class of 1914. I am experienced enough in organization work to realize how much time, thought and intelligent care is required to achieve the smooth, happy progress of the Saturday events.

from Ralph P. Coleman '14:

... I have been wanting to drop you a note and congratulate you and all the staff for the fine handling of the Homecoming Weekend last month. My only regret is that more of our particular group was not in attendance but I am afraid that will have to be their loss ...

and about the tour:

from Lorraine White:

... The "Studio & Town House Tour" certainly deserves a word of praise. It was so enjoyable I wanted to tell you so. My sister, Rita Wootten, a member of the Alumni, introduced me to it. Next year I shall be happy to recommend it to all my friends.

from Rita M. Wootten '61:

... Yesterday's tour of the Studios and Town Houses was delightful. Everyone greeted us so graciously, and the homes were so interesting and beautiful that I'm already looking forward to a repeat.

and from an enthusiastic quarter:

... Just a little note to pass on to the Alumni Association, that we all enjoyed the tour very much and a special thank you to whoever suggested the bus. Hope you can continue the bus for next year's tour. Mrs. Panamarenko,

Mrs. Chwartack, Mrs. Ellenwood and Mrs. Pacisznyk.

Included in the hundreds of letters were notes of regret and best wishes:

Hannah Stuart Robertson wrote:

... To the ones I once knew, will you convey to them my very best wishes and may God bless each and everyone of you ...

and Marian Kalbach: ... I really do love the school and everything about it ...

from Elizabeth Senderling Moore in Florida:

... I send greetings on this 50th Anniversary. Sorry that distance prevents my joining in the celebration. May the reunion be a most happy occasion and I do extend best

wishes to my many good friends of the former School of Industrial Art.

and greetings to "old" Friends of '14 from Margaret Phillips Dillingham of Albuquerque, New Mexico.

IN MEMORIAM

Ann L. Potteiger '15, on October 20, 1964. Miss Potteiger was art supervisor in the Ambler public schools for 45 years, retiring in 1957.

News About Alumni:

George Beach '58, has opened his studios under the name of "George Beach Studios, Creative Art and Design", in the Lewis Tower Building, Philadelphia.

Charles Edelstein '53, was awarded Second Prize for an abstract color print in the Vineland (N. J.) Art Show last summer.

Eileen Taber '58, (Mrs. Sidney Goodman in private life) had a show of her recent drawings and watercolors at Hinckley and Brohel Gallery, Washington, D.C. in September.

Anita Taylor '50, has opened a shop, Taylor's Country Store, featuring gourmet foods—"comestibles for connoisseurs"—at 18th and Sansom Sts., Phila. Try her for specialty meats, rare cheeses—really a new experience in food shopping.

Paul J. Harmelin '63, left for service in Peru with the Peace Corps. He sailed October 8 with a group of some 320 volunteers for work in Peruvian programs of education and community development.

John Foster '30, Director of the Freshman Program at the College, won the Williamson Prize at the Phillips Mill Show (New Hope) last Fall.

Stuart Egnal '63, has joined the staff at John Wanamaker.

Ranulph Bye '38, exhibited recent

watercolors and oils at Grand Central Art Gallery, New York, through November. He recently joined the faculty as Assistant Professor at the Moore College of Art, Phila. He says of his paintings: "I represent the traditional school of painting; not being experimental, I get my inspiration almost entirely from nature, from the life around me, whether the country or the city."

The Cheltenham Township Art Center's 8th annual New Talent Show opened Sunday, November 29, and will run through December 20. Alumni featured are: *Ken Daley '63*, *Louise Marino '64*, *Alvin Sher '64*, and *Jeanette Banks '56*.

Thomas G. Dulin '60, a graduate of the Industrial Design Department works with the Monroe Calculating Machine Company, Orange, New Jersey.

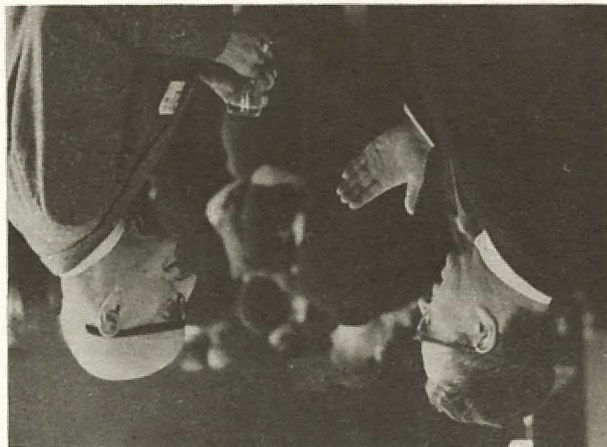
Elizabeth (née May) Stevens '63, designs blouses and fabrics for Ship 'n Shore, Inc., Washington, D.C. She was married last September; her husband, Kenneth, is employed in the Patent Department, U.S. Government.

Recent Marriages:

Ray Porter '57, to Carol Polizzi (of Pratt), on May 23, 1964.

Ellen Beverly Crowther '60, to *Hugh M. Purcell, Jr., '52*, on October 17, 1964.

* These photos were taken during the
very successful Alumni Home-
coming Weekend, October 23, 24
and 25, 1964.



Philadelphia College of Art
Broad and Pine Streets
Philadelphia 2, Pennsylvania

NON-PROFIT ORG.
U.S. POSTAGE
PAID
PERMIT NO. 1103
PHILADELPHIA, PA.

RETURNED TO WRITER
REASON: undelivered
undelivered - returned
no such post office in state
do not remain in this envelope

al nh 10/27

Postage will be
paid by addressee

Scanned

Mrs Gertrude Schmidt Dietrich
51 Buckeye Rd
Glen Cove Long Island
New York

'18
ID

THE UNIVERSITY OF THE ARTS
LIBRARY - ARCHIVES

Form 3547 Requested

Don't allow your name to be excluded
from the membership list now growing
from receipts of annual dues. Send in
your dues now!